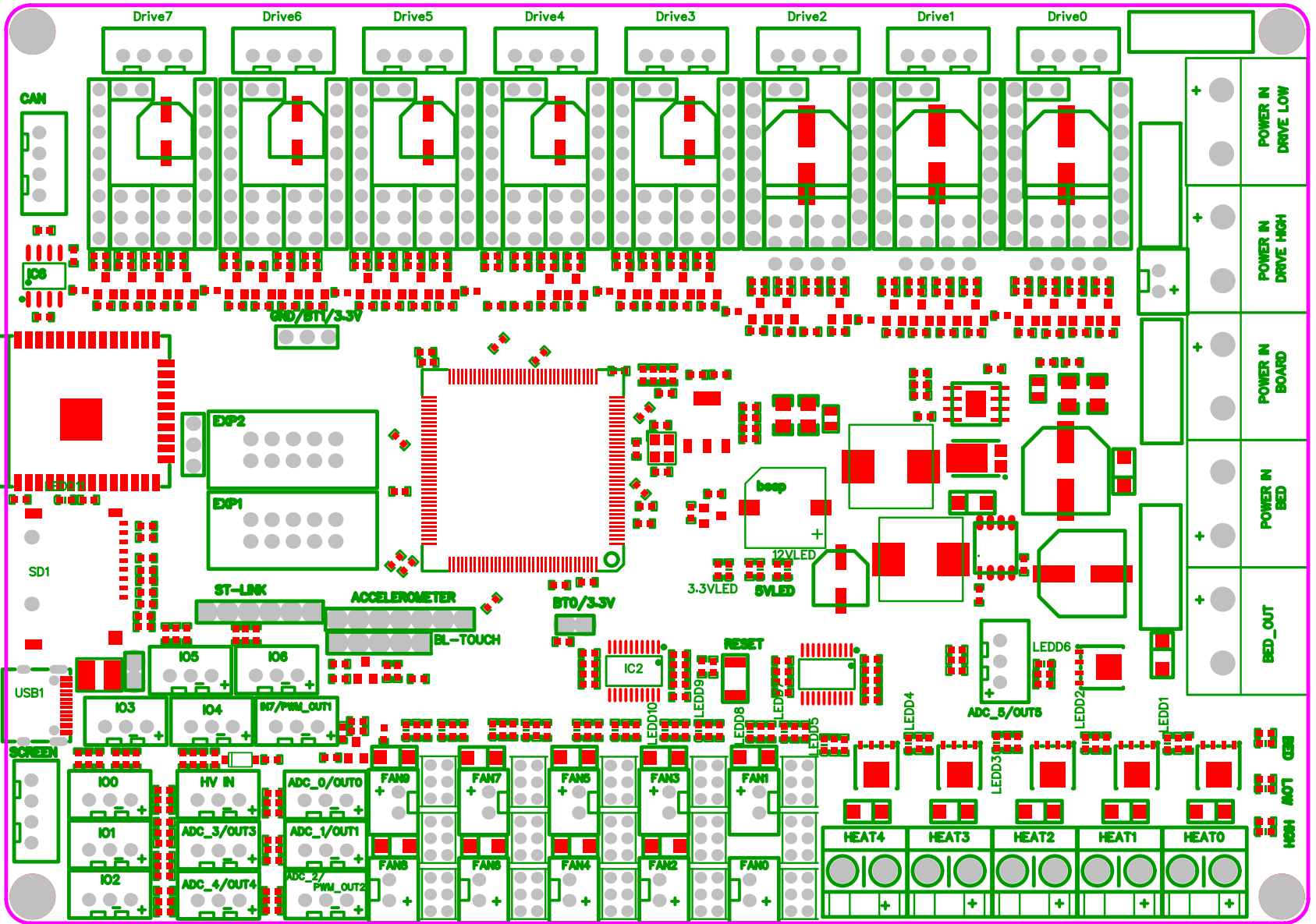


DRIVER	7	6	5	4	3	2	1	0
STEP	PE6	PE0	PE1	PE15	PE14	PE4	PE3	PE2
DIR	PG6	PG3	PF0	PE11	PE8	PG0	PF13	PC5
EN	PG7	PG4	PC15	PF2	PE9	PG1	PF14	PF11
CS/UART	PG5	PG2	PF1	PE10	PE7	PF15	PF12	PC4

TMC MOSI PB5
TMC MISO PB4
TMC SCK PB3

DRIVER 7	DRIVER 6	DRIVER 5	DRIVER 4	DRIVER 3	DRIVER 2	DRIVER 1	DRIVER 0
A A B B	A A B B	A A B B	A A B B	A A B B	A A B B	A A B B	A A B B



EXP2				
GND	PG15	PB6	PB7	PA6
3.3V/5V	RESET	PA7	PA4	PA5

EXP1				
GND	PG14	PC14	PB2	PE12
5V	PG13	PC13	PG8	PE13

SCREEN	
PA10	+
PA9	+
GND	+
5V	+

ST-LINK					ACCELEROMETER							
RESET	PA14	PA13	GND	3.3V	5V	5V	GND	PD0	PD1	PD3	PD4	PD5

BLTOUCH				
GND	5V	PC6	GND	PC3
SERVO		PROBE		

PD6	-	+	PA8	-	+
IO5		IO6			

ADC5	
PC1	-
5V	

PF6	+	PF7	+	PC7	+	PB1	+	PB0	+
HEAT4		HEAT3		HEAT2		HEAT1		HEAT0	

PG9	-	+	PD7	-	+	PF8	-	+
IO3		IO4		IN7				
PG12	-	+	PF3	-	+	PF4	-	+
IO0		HV IN		ADC_0				
PG11	-	+	PF10	-	+	PF5	-	+
IO1		ADC_3		ADC_1				
PG10	-	+	PC0	-	+	PF9	-	+
IO2		ADC_4		ADC_2				

FAN9	FAN7	FAN5	FAN3	FAN1
+	+	+	+	+
PD15	PD12	PB11	PA3	PA1
FAN8	FAN6	FAN4	FAN2	FAN0
+	+	+	+	+
PD14	PB10	PA15	PA2	PA0

BED	
+	PE5